

Frontier Ag. Inc. Starter Program



Weaning, transportation and transfer to feedlots are a major source of stress on young cattle. By using the Frontier Ag Starter Programs, the ease of transition by maximizing dry matter intake and provide critical nutrients can help cattle reach full feed quickly, safely, and profitably.

Electrolyte Balance
Incoming feedlot cattle typically have lost body fluids. Frontier Ag starters contain high levels of electrolytes, especially potassium to aid in rehydration.

Organic Trace Mineral Fortification
Frontier Ag Starters are highly fortified with trace minerals, including organic zinc, copper, manganese, and cobalt to support disease resistance.

Protein Balance
Frontier Ag Starters contain preformed proteins to grow and maintain a healthy, active population of rumen microorganisms and support growth.

Choice of Additives
Proper use of additives can improve animal performance; Frontier Ag Starters are available with approved feed additives.

Product Options

Frontier Ag Starter 1X
High quality 16% protein pelleted feed to be fed at up to 1% of body weight. Ideal for calves on pasture before and after weaning and for up to 28 days when calves enter feed yard.

Frontier Ag Starter 2X
High quality 14% protein pelleted feed to be fed at up to 2% of body weight. Ideal for calves on pasture before and after weaning and for up to 28 days when calves enter the feed yard.

Frontier Ag Starter Concentrate
High quality 28% protein supplement designed to be fed along with grain and roughage. The ideal feeding rate should be 1.0-1.5 lb/hd/day.



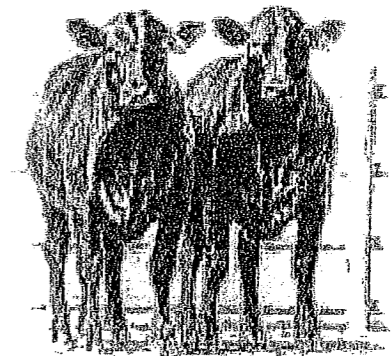
Contact your local sales representative

Maurice Johnson (785) 694-3210

Jeanie Bell (785) 627-6045

Sheldon Pfeifer (785) 754-8213

David Frederking (785) 627-6160



Frontier Ag Starter 1X
Beef Cattle-Starter Supplement
Guaranteed Analysis

Crude Protein, min	16.0%
Crude Fat, min	1.0%
Crude Fiber, max	15.0%
Calcium, min	1.1%
Calcium, max	1.6%
Salt, min	0.8%
Salt, max	1.3%
Potassium, min	1.0%
Vitamin A, min	12000IU/lb
Vitamin D, min	1000 IU/lb
Vitamin E, min	50 IU/lb

On the second day after cattle have arrived at the feedlot introduced Starter 1X at up to 1% of body weight along with free choice hay. By day 3 after arrival offer Starter 1X at 1% of body weight along with grain and roughage in a complete starter ration. Cattle familiar with pelleted feed can be hand-fed Starter 1X upon arrival at the feedlot. Small amounts should be offered at least twice a day with total daily consumption not exceeding 1% of body weight. Good quality grass hay should be offered.



Frontier Ag Starter 2X
Beef Cattle-Starter Supplement
Guaranteed Analysis

Crude Protein, min	14.0%
Crude Fat, min	1.0%
Crude Fiber, max	20.0%
Calcium, min	1.0%
Calcium, max	1.5%
Salt, min	0.5%
Salt, max	1.0%
Potassium, min	1.0%
Vitamin A, min	6000 IU/lb
Vitamin D, min	1000 IU/lb
Vitamin E, min	25 IU/lb

On the second day after cattle have arrived at the feedlot introduce Starter 2X at 1% of body weight along with free choice hay. By day 3 after arrival offer Starter 2X at approximately 2% of body weight along with grain and roughage or offer Starter 2X as the sole ration.

Weaning: Starter 2X free choice along with roughage to nursing calves for up to 30 days before weaning.



Frontier Ag Starter Conc.
Beef Cattle – Feedlot Supplement
Guaranteed Analysis

Crude Protein, min	28.0%
Crude Fat, min	1.0%
Crude Fiber, max	12.0%
Calcium, min	3.7%
Calcium, max	4.7%
Salt, min	3.7%
Salt, max	4.7%
Potassium, min	2.0%
Vitamin A, min	50000IU/lb
Vitamin D, min	5000 IU/lb
Vitamin E, min	200 IU/lb

Feeding Directions:
 Thoroughly mix with grain and roughage. The normal feeding rate is 1.0-1.5 pound per head daily. A clean, fresh source of drinking water is also necessary.

Also Available:
 Frontier Ag Starter Conc. D90.8



General Guidelines:

Incoming cattle should be offered good quality hay free choice until they have eaten to capacity. On the second day after cattle have arrived at the feedlot introduce Frontier Ag Starter per feeding directions for each product along with free choice hay. Frequent feeding is recommended to promote maximum intake in stressed animals. Provide clean, fresh water at all times

